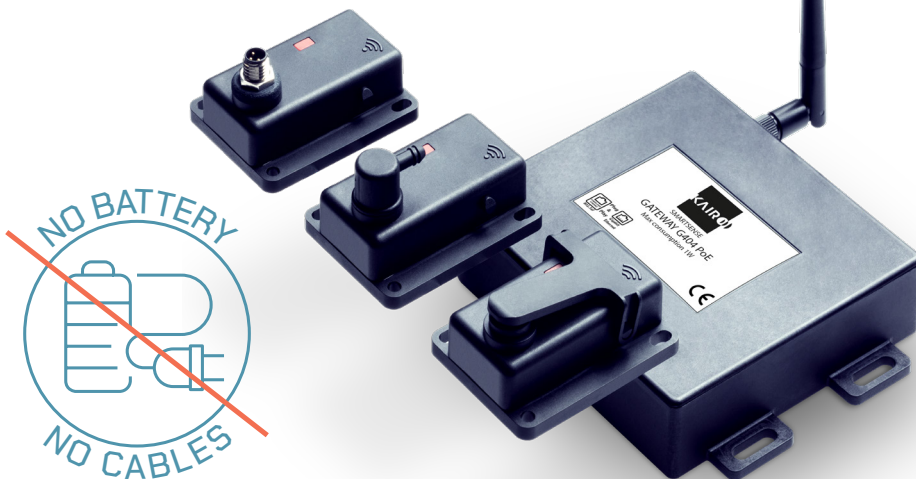




Kairo SmartSense

How it works



The **KSS** philosophy: monitoring **everything**, **everywhere**, **easily**


SmartSense system is an innovative solution designed to implement a complete control-monitor system in no-time. Using SmartSense devices you can control **any type of industrial asset**, modern and traditional machines, without batteries and without wires, for an **easy and direct retrofit**

Is my process under control?

Which is the next maintenance?

Where is my asset?

Is the number of cycles declared correct?

A photograph of two men in a control room. The man on the left is older, with a beard and glasses, wearing a blue shirt. The man on the right is younger, also with glasses and a blue shirt. They are both looking intently at a large computer monitor displaying data. The background is dark with some blue lights, suggesting a technical or industrial environment.

Let's find out
how answering with Kairo
SmartSense system!

Discover KSS in few steps

HARDWARE

Install the wireless sensors...

...by contacting a mechanical movement

Mechanical sensor S101-ME11-D00

NO BATTERY
NO CABLES

DOWNLOAD the manual!

...in parallel to a pneumatic valve

Pneumatic sensor S101-PN11-D00

NO BATTERY
NO CABLES

DOWNLOAD the manual!

...or in parallel to 24V PNP/NPN digital signal

Electric sensor S101-EL11-D00

PLC

Proximity Sensor

NO BATTERY
NO CABLES

DOWNLOAD the manual!

...and connect the gateway to a Power over Ethernet (PoE) socket

Power Over Ethernet gateway G404-POE1-D00

NO BATTERY
NO CABLES

DOWNLOAD the manual!

SOFTWARE

Configure and start the monitoring

Monitoring your assets everywhere | Set the alarms | Trigger the actions

Kairo Cloud

Making your process **smart** in 3 steps

Step 1



Identify assets in process

Analyze your process and identify the strategic assets

SmartSense sensors can be installed directly on specific assets or components of machines that are relevant for the productivity and efficiency of a production process

1

Step 2



HW selection and installation

Sensor selection and installation

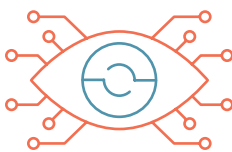
Select the correct type of SmartSense sensor:

- Mechanical
- Pneumatic
- Electric



2

Step 3



System configuration and process monitoring

Access the Kairo's Cloud Platform and start monitoring everything, everywhere

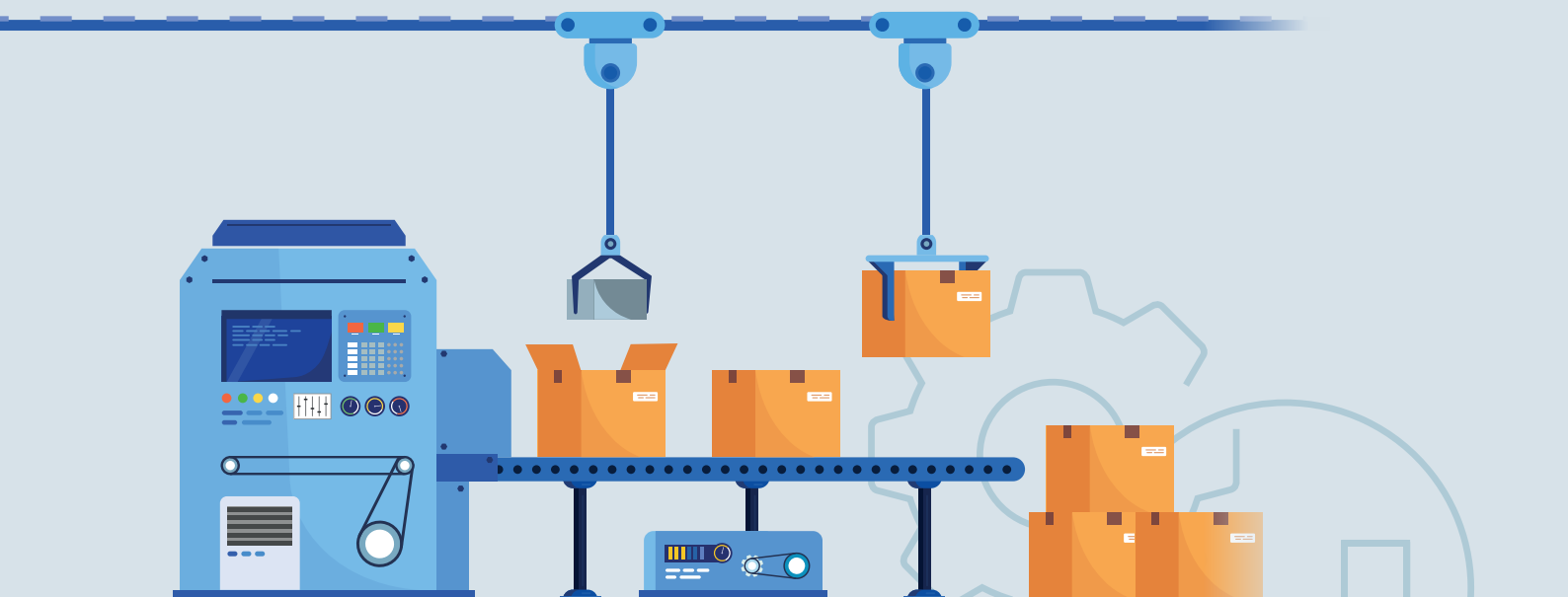
Configure the platform, monitor and optimize your process in real time:

- Traceability
- Performance
- Availability
- Maintenance
- Quality

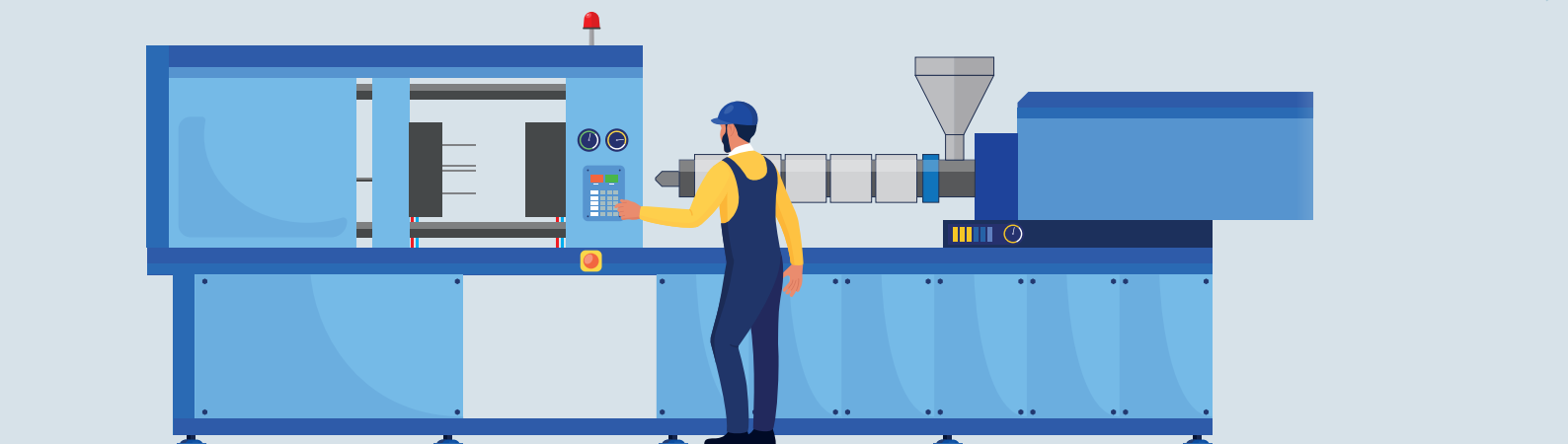
3

Discover how KSS works with practical usecase examples

PACKAGING



INJECTION MOULDING



SmartSense system configuration example

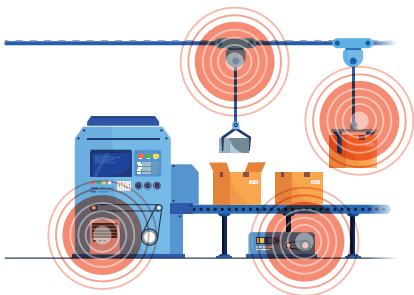
Packaging process control

Step 1



Identify assets in process

Analyze your process and identify the strategic assets



Step 2

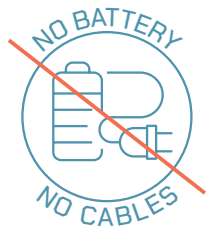


HW selection and installation

Select, install and configure SmartSense components

Order

- N° 2 S101-PN11-D00
- N° 1 S101-ME11-D00
- N° 1 S101-EL11-D00
- N° 1 G404-POE1-D00

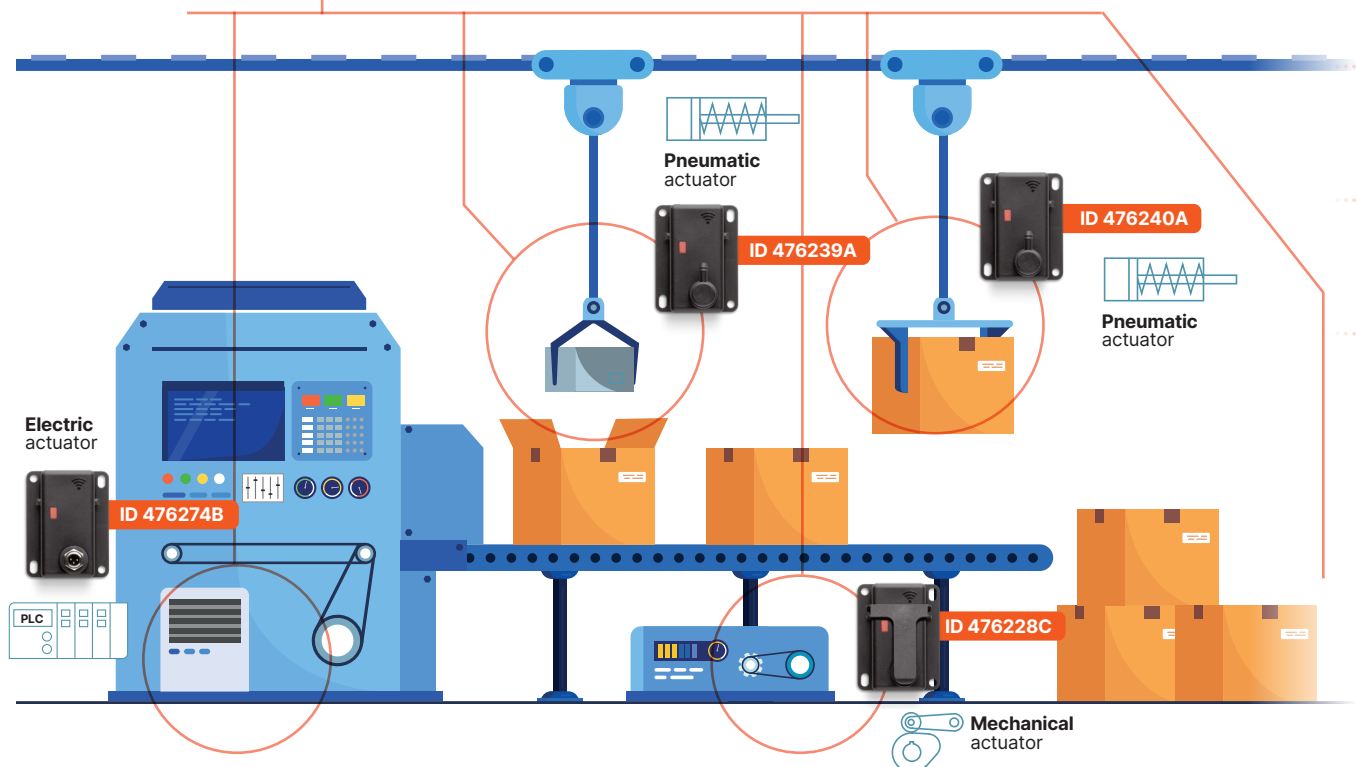


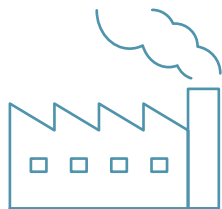
Maintenance

- Number of cycles
- Warning
- Alarm
- Email report

Production

- Quantity
- Cycle time
- Downtime alarm
- Quantity monitor
- Email report





The KSS philosophy: **monitoring everything, everywhere, easily**



Step 3



System configuration and process monitoring

Configure SmartSense platform

Data collection

SmartSense gateways transfer information directly to the standard Kairo's Cloud platform (PoE option) or to a PLC (TPC/IP option).

Monitoring the asset

Events monitoring

Kairo's Cloud platform monitors the number of cycles and the cycle time of assets and workstations, generating notification emails in case of special events.

- Total cycle: 2'340
- Next maintenance: 4'800
- **Warning: one piece missing**



- Total cycle: 1'200
- Quantity produced: 2'400
- Cycle time: 26 sec.
- **Duty cycle 80%**



- Belt cycles: 125'000'000
- **Warning: need maintenance**



- Machine mode: Automatic
- **Alarms: None**



PoE



<https://smartsense.kairo.cloud/>

KAIRO

LOG INTO YOUR ACCOUNT

Email *

Password *

Login

SmartSense system configuration example

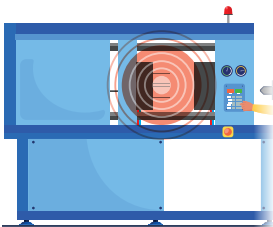
Injection moulding process control

Step 1



Identify assets in process

Analyze your process and identify the strategic assets



Step 2

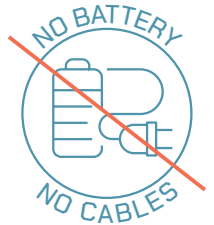


HW selection and installation

Select, install and configure SmartSense components

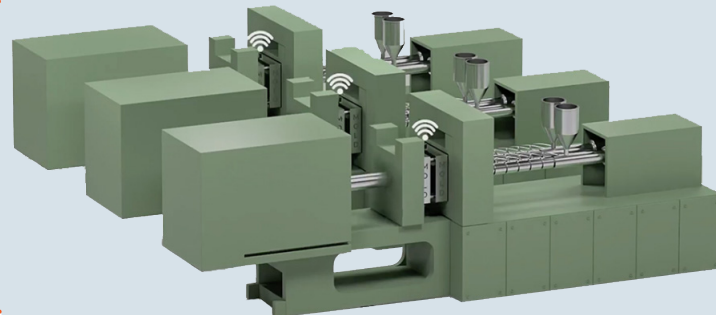
Order

- N° 1 S101-ME11-D00
- N° 1 G404-POE1-D00



Maintenance and production

- Number of cycles
- Warning
- Alarm
- Quantity
- Cycle time
- Downtime alarm
- Email report



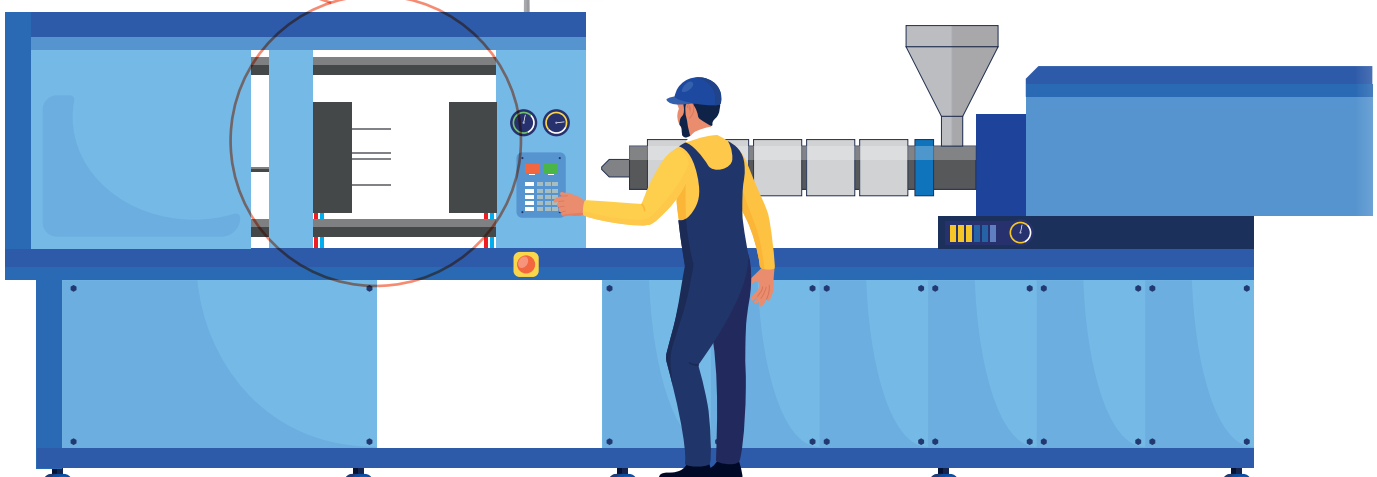
WATCH the Animation!

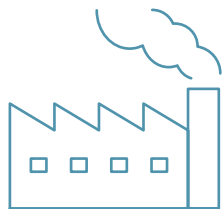


Mechanical actuator



ID 484339A





The KSS philosophy: **monitoring everything, everywhere, easily**



Step 3



System configuration and process monitoring

Configure SmartSense platform

Data collection

SmartSense gateway transfers information directly to the standard Kairo's Cloud Platform or to the customer specific ERP using dedicated connectors.

Monitoring the asset

Events monitoring

SmartSense sensors are mounted directly on the moulds becoming part of them and enabling the monitoring of any specific mould for its entire lifetime. Performances and total number of cycles can be tracked in relation to the specific injection moulding machine and/or the production facility allowing also the geolocation of the production batch. The Kairo's Cloud Platform monitors the number of cycles and the cycle time of every single mould, generating notification emails in case of speciale events.



- Mould total cycles: 3'495
- Number of cavities: 3
- Parts produced: 10'485
- **Next maintenance: 3'500**
- Avg cycle time: 5,5 s
- Duty cycle: 65 %
- **Production rate: OK**
- Production site: Site 1



PoE



ID 484339A

KAIRO

LOG INTO YOUR ACCOUNT

Email *

Password *

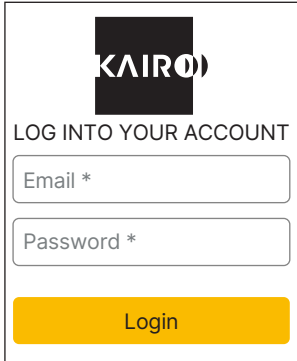
Login



<https://smartsense.kairo.cloud/>

Choose your favourite software solution

CLOUD

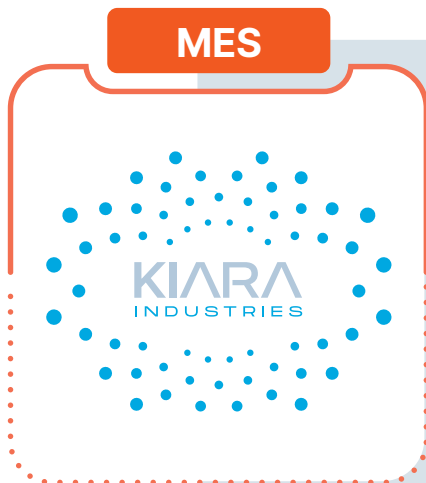


Kairo SmartSense Cloud Platform

Kairo standard solution based on a centralized and subscription based Cloud service for collecting, storing and analyzing your production data.

This solution provides an **ultra fast and affordable data collection system granting a secure and global access** to a service continuously upgraded and optimized by interacting with a simple web user interface.

MES

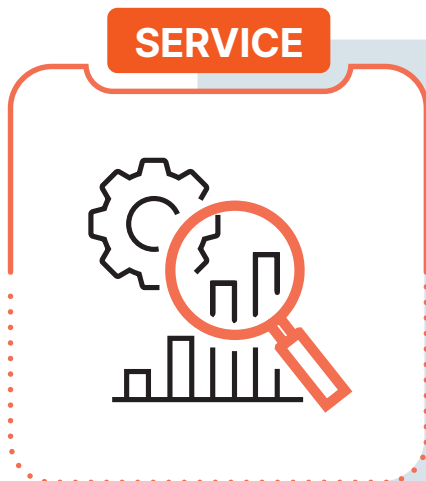


Lightweight and scalable MES with blockchain certification of your data

Data collected by Kairo's sensors are collected by an innovative, lightweight and scalable MES system by Kiara Industries.

Status and production **data** of machines **are collected, normalized, encrypted and digitally signed directly at the source** with a **blockchain** cryptographic key. **This process guarantees legal validity to your data.**

SERVICE



Kairo's local management service or dedicated data connectors

On-premise solutions running as Windows® server services or Docker® containers for the configuration of the hardware, alarm definition and tracking of fundamental KPIs. **Data connectors** can also be provided upon request **to transfer data** from the Kairo's Cloud, or **directly** from Kairo's gateways, to pre-existing IT infrastructures (ERP, MES, etc...).

Have all the answers you need, in real time

Is my process under control?

- Quantity produced: 4'800
- Cycle time: 26 sec.
- **Deviation <5 %**



Which is the next maintenance?

- Total cycle: 87'600
- **Warning:**
Maintenance in 500 cycles



Where is my asset?

- Asset operation detected
in Main Production Facility
- **Asset operated correctly**



Is the number of cycles declared correct?

- Total cycle: 1'200
- Quantity produced: 4'800
- Cycle time: 26 sec.
- **Duty cycle 95%**



Kairo SmartSense:
getting data **anytime,**
everywhere, easily



KAIRO SMART, CONNECTED.

KAIRO Srl

Via Papa Giovanni XXIII 3/G
25086 Rezzato (BS) ITALY
info@kairo.solutions

www.kairo.solutions